

Shakspeare Walk , London, N16 8TN

Nestled in the vibrant area of Shakspeare Walk, London, this charming flat offers a delightful blend of comfort and convenience. Spanning an inviting 592 square feet, the property features two well-proportioned bedrooms, making it an ideal choice for couples, small families, or professionals seeking a serene retreat in the heart of the city.

Upon entering, you are welcomed into a spacious reception room that serves as the perfect space for relaxation or entertaining guests. The natural light that floods this area creates a warm and inviting atmosphere, enhancing the overall appeal of the flat. The layout is thoughtfully designed, ensuring that every inch of space is utilised effectively.

The flat also boasts a modern bathroom, equipped with essential amenities to cater to your daily needs. The kitchen, while not specified, is typically designed to be functional and efficient, allowing for easy meal preparation.

£2,000 Per Month

Shakspeare Walk

, London, N16 8TN

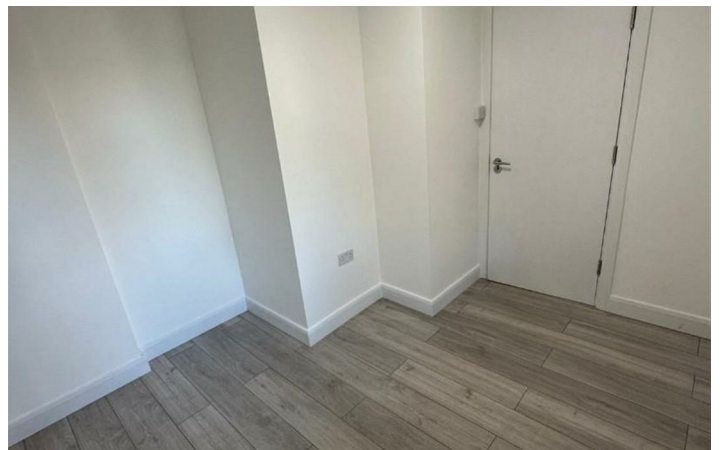
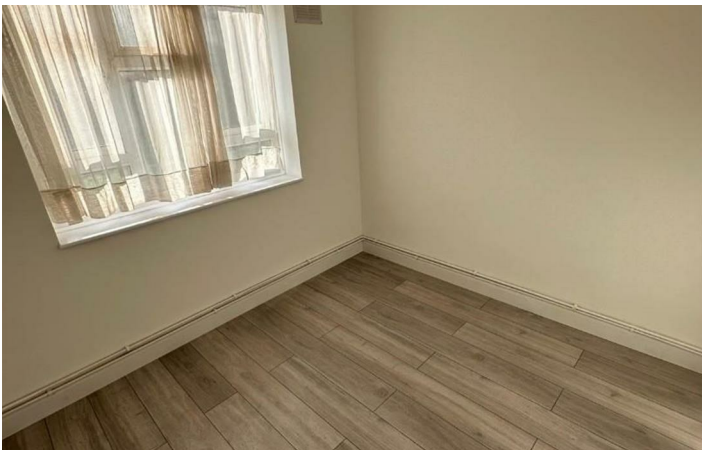
 2

 1

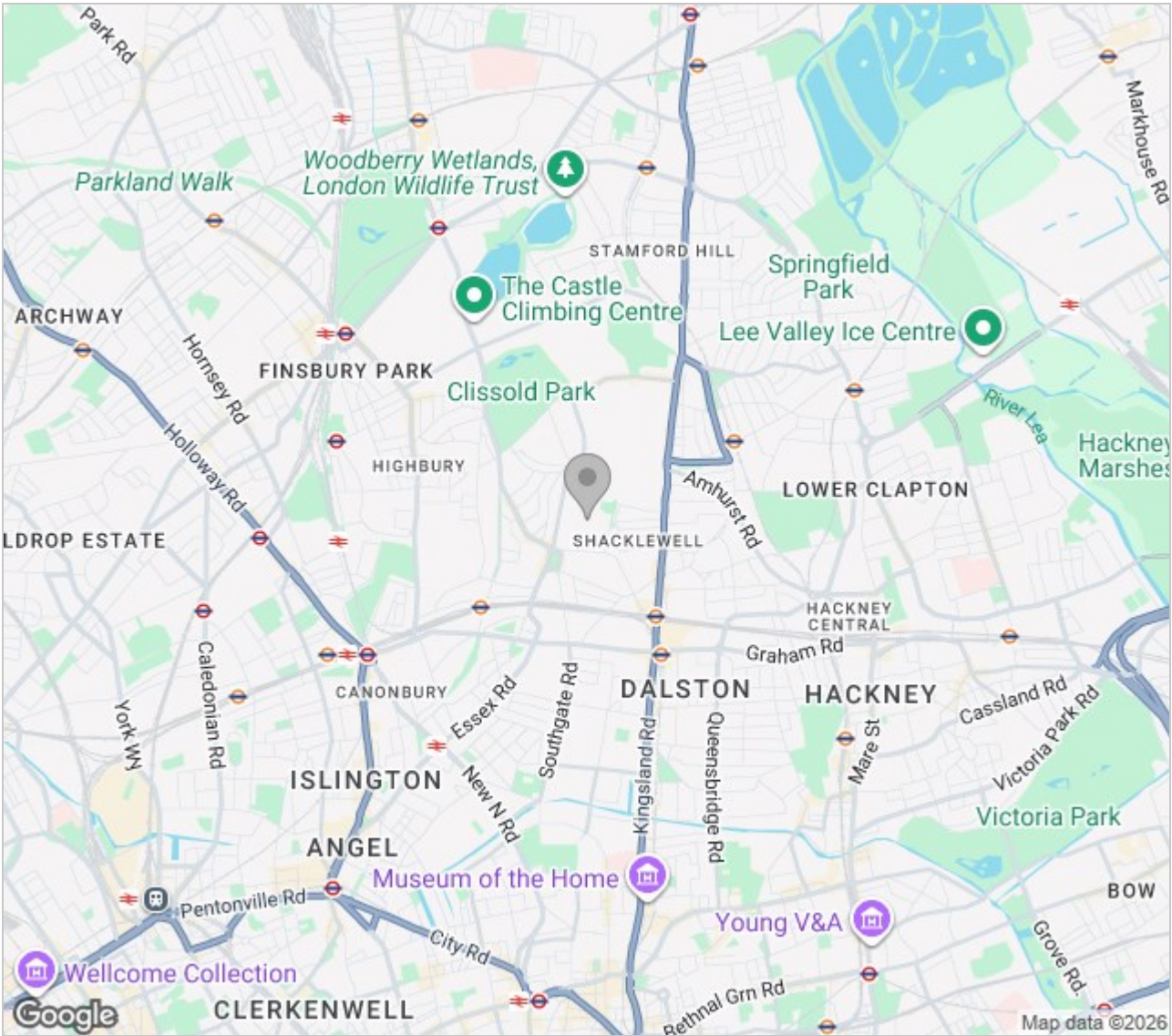
 1

 C

Directions



Area Map



Energy Efficiency Rating		
	Current	Potential
Very energy efficient - lower running costs		
(92 plus) A		
(81-91) B		
(69-80) C		
(55-68) D		
(39-54) E		
(21-38) F		
(1-20) G		
Not energy efficient - higher running costs		
England & Wales	EU Directive 2002/91/EC	

Environmental Impact (CO ₂) Rating		
	Current	Potential
Very environmentally friendly - lower CO ₂ emissions		
(92 plus) A		
(81-91) B		
(69-80) C		
(55-68) D		
(39-54) E		
(21-38) F		
(1-20) G		
Not environmentally friendly - higher CO ₂ emissions		
England & Wales	EU Directive 2002/91/EC	

These particulars, whilst believed to be accurate are set out as a general outline only for guidance and do not constitute any part of an offer or contract. Intending purchasers should not rely on them as statements of representation of fact, but must satisfy themselves by inspection or otherwise as to their accuracy. No person in this firms employment has the authority to make or give any representation or warranty in respect of the property.



5 Turnpike Parade Green Lanes, London, N15 3EA
Tel: 0208 888 3556 Email: info@easypropertieslondon.co.uk
www.easypropertieslondon.co.uk